

**SCISSOR LIFT under 11M**  
**BOOM LIFT under 11M**  
**BOOM LIFT (WP) over 11M**

**WEEKDAY OR WEEKEND  
TRAINING AVAILABLE  
AT YOUR SITE OR OURS**

**SMALL  
CLASS  
SIZES**

# SCISSOR LIFT under 11M

## BOOM LIFT under 11M

## BOOM LIFT (WP) over 11M

### EWPA (YELLOW CARD) - SCISSOR LIFT AND BOOM LIFT UNDER 11M – 1 DAY

LOCATION: Geelong, Werribee & Onsite **SATURDAYS ONLY**

In this Mobile Elevating Work Platforms (EWPA) Yellow Card training course you will learn the skills and knowledge required to operate an elevating work platform under 11 metres. This Scissor Lift and Boom Lift course is designed to ensure that successful participants are able to safely use Mobile Elevated Work Platforms under 11 metres.

#### **Upon successful completion participants will have the ability to:**

- Operate elevated work platforms under 11 meters
- Operate a Scissor Lift AND Operate a Boom Lift under 11 metres
- Understand equipment characteristics, technical capabilities and limitations of equipment
- Understand operational procedures
- Identify hazards and assess risks associated with operation
- Check and assess operational capabilities of equipment
- Access, interpret and apply technical information relating to the planning and operation of equipment

RIIHAN301E - Operate Elevating Work Platform

**COURSE OUTCOME:** EWPA Yellow Card & Nationally Accredited Statement of Attainment from MultiSkills Training

### BOOM-TYPE ELEVATED WORK PLATFORM OVER 11M (WP) – 2 DAYS

LOCATION: Geelong, Werribee & Onsite

This course will teach you the skills required to operate a boom-type elevating work platform (EWP) with a boom height of 11 metres or more. In this course you will learn how to operate, set-up, position and work safely from a boom-type elevated work platform over 11metres.

#### **Upon successful completion participants will have the ability to:**

- Operate an elevating work platform with a platform height 11 metres or more
- Position, stabilise and set up elevating work platforms
- Understand elevating work platform characteristics and capabilities
- Estimation of loads
- Effective communication skills
- Identify hazards and assess risks associated with operation
- Conduct pre-operational checks and identify faults
- Check and assess condition of safety harness and lanyard

TLILIC0005 – Licence to operate a boom-type elevating work platform (boom length 11 metres or more)

**STUDY MATERIAL:** Students are to complete pre-training study material supplied by MultiSkills Training

## OBTAINING YOUR LICENCE (BOOM LIFT over 11M - WP)

The licence to perform High Risk Work is issued by WorkSafe Victoria. When the assessor deems you competent, you will need to lodge your licence application and Notice of Assessment within 60 days to obtain a high risk work licence. You can now apply, renew or amend a high risk work licence online at: [www.myworksafe.vic.gov.au](http://www.myworksafe.vic.gov.au). You will receive an email from myWorkSafe that contains your Training ID. The email will contain a link that allows you to download the Notice of Assessment (NOA) to enable you to lodge your licence application. All licence applications incur a fee payable to WorkSafe Victoria. Further details can be found at: [www.worksafe.vic.gov.au/high-risk-work-licence](http://www.worksafe.vic.gov.au/high-risk-work-licence) or by calling WorkSafe on 1300 852 562.

## IMPORTANT INFORMATION

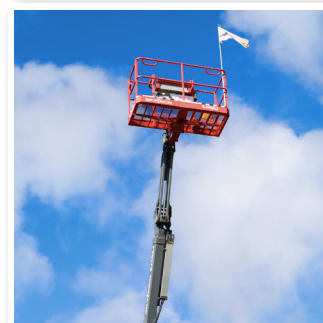
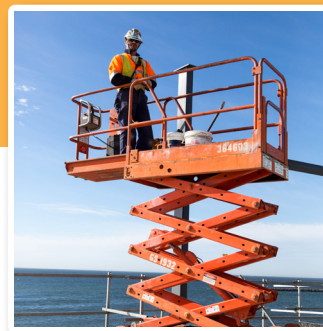
**ASSESSMENT METHOD:** Written activities, verbal questions, observation and practical demonstration

**DELIVERY MODE:** Face to Face

**FEES:** Statement of course fees found here - <https://www.multiskills.com.au/faqs/>

## ENTRY REQUIREMENTS

- Must be 18 Years age or over
- A USI Number (Unique Student Identifier) Visit: [www.usi.gov.au](http://www.usi.gov.au)
- Ability to comprehend the English language
- Safety footwear
- Proof of identity
- Proof of Victorian residency (for boom lift over 11m only)



NATIONALLY RECOGNISED  
TRAINING



T01D: 40846 TRADE TRAINING GROUP PTY LTD

