

LICENCE TO PERFORM HIGH RISK WORK
NON-SLEWING MOBILE CRANE

(greater than 3 tonnes capacity) CN

SLEWING MOBILE CRANES

Up to 20 tonnes – C2

Up to 60 tonnes - C6

Up to 100 Tonnes – C1

Over 100 Tonnes – C0

**WEEKDAY OR WEEKEND
TRAINING AVAILABLE
AT YOUR SITE OR OURS**

**SMALL
CLASS
SIZES**



LICENCE TO PERFORM HIGH RISK WORK

CN - NON-SLEWING MOBILE CRANE (greater than 3 tonnes capacity)

C2 - SLEWING MOBILE CRANE (up to 20 tonnes)

C6 - SLEWING MOBILE CRANE (up to 60 tonnes)

C1 - SLEWING MOBILE CRANE (up to 100 tonnes)

CO - SLEWING MOBILE CRANE (over 100 tonnes)

NON SLEWING MOBILE CRANE (CN) - 4 DAYS

LOCATION: Geelong & Onsite

In this course you will learn the skills required to operate a non-slewing mobile crane greater than 3 tonnes capacity that incorporates a boom or jib which includes articulated type mobile cranes. WorkSafe issued CN Crane Licence cover use of Telehandlers, Frannas, & Reach Stackers.

Upon successful completion participants will have the ability to:

- Operate non-slewing crane greater than 3 tonnes capacity including all functions to their maximum extension
- Lifting and moving loads according to crane load charts
- Read and interpret crane specifications & understand non-slewing crane characteristics
- Use communication techniques including whistles, hand signals and use of two-way radios
- Identify hazards and assess risks associated with operation
- Conduct pre and post operational checks and identify faults

TLILIC0018 - Licence to operate a non-slewing mobile crane (greater than 3 tonnes capacity)

STUDY MATERIAL – Students are to complete pre-training study material supplied by MultiSkills Training



C2 SLEWING MOBILE CRANE (up to 20 tonnes) - 4 DAYS

LOCATION: Onsite Only

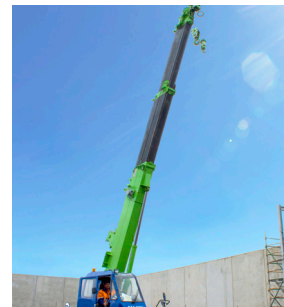
In this course you will learn the skills required to operate a slewing mobile crane with a capacity up to 20 tonnes.

Upon successful completion participants will have the ability to:

- Operate slewing mobile crane up to 20 tonnes in different workplaces transferring key principles of safe operation to different contexts
- Operate crane including all functions to their maximum extension
- Lifting and moving loads according to crane load charts
- Read and interpret crane specifications
- Identify hazards and assess risks
- Conduct pre and post operational checks and identify faults

TLILIC0022 - Licence to operate a slewing mobile crane (up to 20 tonnes)

STUDY MATERIAL – Students are to complete pre-training study material supplied by MultiSkills Training



C6 SLEWING MOBILE CRANE (up to 60 tonnes) - 4 DAYS

LOCATION: Geelong & Werribee & Onsite

In this course you will learn the skills required to operate a slewing mobile crane with a capacity up to 60 tonnes.

Upon successful completion participants will have the ability to:

- Plan for the safe and effective operation of a slewing mobile crane (up to 60 tonnes capacity)
- Conduct routine pre and post operational crane checks
- Correctly set up the crane considering prevailing conditions
- Conduct test lifts and transferring loads
- Use controls, outriggers and safety equipment
- Communicate effectively with dogman/rigger

TLILIC0023 - Licence to operate a slewing mobile crane (up to 60 tonnes)

STUDY MATERIAL – Students are to complete pre-training study material supplied by MultiSkills Training



C1 SLEWING MOBILE CRANE (Up to 100 tonnes) - 4 DAYS

LOCATION: Onsite Only

In this course you will learn the skills required to operate a slewing mobile crane with a capacity up to 100 tonnes.

Upon successful completion participants will have the ability to:

- Plan for the safe and effective operation of a slewing mobile crane (up to 100 tonnes capacity)
- Conduct routine pre and post operational crane checks
- Conduct test lifts and transferring loads
- Use controls, outriggers and safety equipment
- Move loads using best mobile practice
- Understand load charts
- Communicate effectively with dogman/rigger

TLILIC0021 - Licence to operate a slewing mobile crane (up to 100 tonnes)

STUDY MATERIAL – Students are to complete pre-training study material supplied by MultiSkills Training



CO OPEN SLEWING MOBILE CRANE (Over 100 tonnes) - 4 DAYS

LOCATION: Onsite Only

In this course you will learn the skills required to operate a slewing mobile crane with a capacity over 100 tonnes.

Upon successful completion participants will have the ability to:

- Plan for the safe and effective operation of a slewing mobile crane (Over 100 tonnes capacity)
- Conduct routine pre and post operational crane checks
- Conduct test lifts and transferring loads
- Use controls, outriggers and safety equipment
- Move loads using best mobile practice
- Communicate effectively with dogman/rigger

TLILIC0020 - Licence to operate a slewing mobile crane (Over 100 Tonnes)

STUDY MATERIAL – Students are to complete pre-training study material supplied by MultiSkills Training



IMPORTANT INFORMATION

ASSESSMENT METHOD: Written activities, verbal questions, observation and practical demonstration

DELIVERY MODE: Face to Face

OBTAINING YOUR LICENCE: The licence to perform High Risk Work is issued by WorkSafe Victoria. When the assessor deems you competent, you will need to lodge your licence application and Notice of Assessment within 60 days to obtain a high risk work licence. You can now apply, renew or amend a high risk work licence online at: www.myworksafe.vic.gov.au

You will receive an email from myWorkSafe that contains your Training ID. The email will contain a link that allows you to download the Notice of Assessment (NOA) to enable you to lodge your licence application. All licence applications incur a fee payable to WorkSafe Victoria. Further details can be found at: www.worksafe.vic.gov.au/high-risk-work-licence or by calling WorkSafe on 1300 852 562

ENTRY REQUIREMENTS

- Must be 18 Years age or over
- A USI Number (Unique Student Identifier) Visit: www.usi.gov.au
- Ability to comprehend the English language
- Safety footwear and sunglasses
- Proof of identity
- Proof of Victorian residency



TOID: 40846
TRADE TRAINING GROUP
PTY LTD