

**WEEKDAY OR WEEKEND  
TRAINING AVAILABLE  
AT YOUR SITE OR OURS**



**SMALL  
CLASS  
SIZES**

# PLANT OPERATIONS & TRAFFIC MANAGEMENT

## PLANT EQUIPMENT COURSES

Learn the skills and knowledge required to safely operate a variety of plant machinery.

**Upon successful completion participants will have the ability to:**

- Plan and prepare for work
- Conduct machine pre-operational checks
- Operation of plant including lifting, carrying & placing of materials
- Select and remove attachments
- Relocate the plant, carry out plant operator maintenance and clean up
- Calculate safe working loads
- Apply site and plant safety requirements



UNIT CODE	UNIT TITLE	DURATION
RIIMP0318F	Conduct civil construction skid steer loader operations	3 Days
RIIMP0319E	Conduct backhoe/loader operations	3 Days
RIIMP0320F	Conduct civil construction excavator operations	3 Days
RIIMP0321F	Conduct civil construction wheeled front end loader operations	3 Days
RIIMP0317F	Conduct roller operations	3 Days
RIIMPO337E	Conduct articulated haul truck operations (Geelong only)	2 Days
RIIMP0323E	Conduct civil construction dozer operations (Onsite only)	3 Days

## TRAFFIC MANAGEMENT

**Upon successful completion participants will have the ability to:**

- Understand a traffic management plan
- Control and direct traffic
- Understand traffic control signage and barricading requirements
- Assess hazards and risks



UNIT CODES	UNIT TITLE	DURATION
RIIWH5205E & RIIWH5302E	Control traffic with stop-slow bat & Implement traffic management plans	2 Days

## V.O.C. - VERIFICATION OF COMPETENCY

A VOC is a method of assessment that can assist employers in verifying the competency of employees and contractors who will be required to operate plant equipment in their workplace. VOC's also serve the purpose of ensuring the practical skills and knowledge of staff and contractors are current.

**Pre-requisite:** You must hold the current competency for any VOC undertaken.

## IMPORTANT INFORMATION

**COURSE OUTCOME:** Upon successful completion of this course, you will be issued with a nationally accredited statement of attainment and competency card.

**ASSESSMENT METHOD:** Written activities, verbal questions, observation and practical demonstration

**DELIVERY MODE:** Practical learning environment and classroom

**LOCATION:** Werribee, Geelong or on your site

## ENTRY REQUIREMENTS

- Must be 17 Years age or over
- A USI (Unique Student Identifier) Visit: [www.usi.gov.au](http://www.usi.gov.au)
- Ability to comprehend the English language
- Safety footwear

**WEEKDAY OR WEEKEND TRAINING AVAILABLE AT YOUR SITE OR OURS**

TOID: 40846 TRADE TRAINING GROUP PTY LTD



Skid Steer



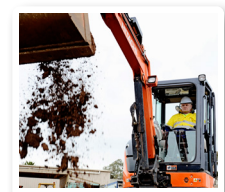
Backhoe



Front End Loader



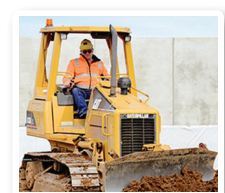
Roller



Excavator



Haul Truck



Dozer