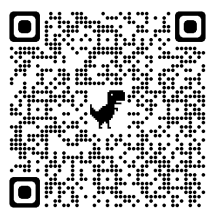


RII30820
CERTIFICATE III
IN CIVIL CONSTRUCTION PLANT OPERATIONS
GEELONG

**GOVERNMENT
FUNDING
AVAILABLE***

**SMALL
CLASS
SIZES**



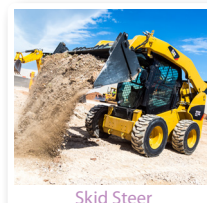
RII30820 CERTIFICATE III IN CIVIL CONSTRUCTION PLANT OPERATIONS



This qualification reflects the role of individuals working as skilled operators with civil construction plant, who apply a broad range of skills in varied work contexts, using some discretion and judgement and relevant theoretical knowledge. Successful participants may provide theoretical advice and support a team. The course is designed for individuals to gain the skills and knowledge required to work safely and competently across a range of work tasks that are carried out regularly within civil construction. Training and assessment for traffic management is included in this course, along with plant operator training and assessment for skid steer loader, excavator, wheeled front end loader, roller and dozer are also included in this course. Upon successful completion participants are awarded Certificate III in Civil Construction Plant Operations.

COURSE STRUCTURE

UNIT CODE	UNIT TITLE
RIIBEF201E	Plan and organise work
RIICCM201E	Carry out measurements and calculations
RIICCM202E	Identify, locate and protect underground services
RIICCM203E	Read and interpret plans and job specifications
RIICCM205F	Carry out manual excavation
RIICCM206E	Support plant operations
RIICCM207E	Spread and compact materials manually
RIICCM208E	Carry out basic levelling
RIICOM201E	Communicate in the workplace
RIIRIS301E	Apply risk management processes
RIISAM201E	Handle resources and infrastructure materials and safely dispose of nontoxic materials
RIISAM203E	Use hand and power tools
RIISAM204E	Operate small plant and equipment
RIIWH5201E	Work safely and follow WHS policies and procedures
RIIWMG203E	Drain and dewater civil construction sites
RIIMPO318F	Conduct civil construction skid steer loader operations
RIIMPO319E	Conduct civil construction dozer operation
RIIMPO320F	Conduct civil construction excavator operations
RIIMPO321F	Conduct civil construction wheeled front end loader operations
RIIMPO317F	Conduct roller operations
RIIWH5302E	Implement traffic management plans
RIIWH5205E	Control traffic with stop-slow bat



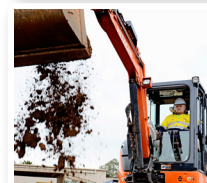
Skid Steer



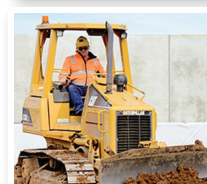
Roller



Front End Loader



Excavator



Dozer

FEES

Government Funded Student	COST
Government Funded Student*	\$0 Tuition Fee \$0 Materials Fee
<p>* The student tuition fees as published are subject to change given individual circumstances at enrolment</p> <p>* This training is delivered with Victorian and Commonwealth Government funding & conditions apply - for more information please go to multiskills.com.au/funded-courses</p> <p>* For further eligibility information please visit: multiskills.com.au/funded-courses</p> <p>* For further information on Skills First please visit: https://www.education.vic.gov.au/training/providers/funding/Pages/skillsfirst.aspx</p> <p>* If you are deemed not yet competent on any unit re-assessment fees will apply</p>	
Non-Government Funded Student**	\$8500
*If you are deemed not yet competent on any unit re-assessment fees will apply	

IMPORTANT INFORMATION

ASSESSMENT METHOD: Practical demonstration & observation, projects / portfolios, written questioning, verbal questioning, scenario & case studies – problem solving

PACKAGING RULES: 20 Units of Competency: 15 Core / 5 Electives

ADDITIONAL UNITS: RIIWH5205E Control traffic with stop-slow bat & RIIWH5302E Implement traffic management plans are additionally included in this course based on industry consultation. Students may elect to opt out for this to be recognised on statement of attainment.

ENTRY REQUIREMENTS

- Applicants must be aged 17 or over at the time of course commencement
- Applicants are expected to have literacy and numeracy skills at Year 10 or Australian Core Skills Framework Level 3. This entry requirement is assessed at the time of enrolment via a pre-training review.
- Australian or New Zealand Citizens or Holder of a Permanent Visa
- Asylum seekers - If you are an asylum seeker, you may be eligible under the Asylum seeker VET program.
- A USI Number (Unique Student Identifier)
- Safety footwear and sunglasses

TOID: 40846 TRADE TRAINING GROUP PTY LTD

DELIVERY MODE: Face-to face

LOCATION: 351 – 359 Portarlington Road, Moolap, VIC

CURRENCY: Current

DURATION

The course duration is a minimum period of one year and extended to two years where required. The student is required to attend 40 face-to-face training days at MultiSkills Training facilities. The delivery of the course is flexible and requires the student to attend blocks of common skill sets which are scheduled throughout the duration of the course.

HOURS: 7:45am - 4pm (Monday to Friday, some courses available on weekends)

